



by Epicor

## Landed Cost

Do you know the true landed cost of your inventory?

*Historically the determination of true Landed Cost of inventory has been characterised by excessive paperwork, long waiting periods and incorrect valuation due to time consuming manual calculations.*

*Until now manual and computerised accounting systems have failed to provide a practical and efficient methodology to calculate the Landed Cost of inventory.*

PO No	Item No	Received	Unit Cost	Extended Cost	Calc. Duty	Actual Duty	Indirect Cost	% Cost Uplift	Landed Cost	Landed Unit Cost
113	ACCT-ACH-DG25	100.0	475.00	47,500.00	11,461.62	70.25	29.41	10.5	52,617.49	526.17
113	ACCT-ACH-FS25	100.0	2.00	205.00	60.77	.47	19.90	10.5	237.45	2.37
113	ACCT-ACH-FS25B	200.0	30.00	7,770.50	1,875.00	12.00	100.00	10.5	9,712.00	48.56
114	007086	650.0	720.04	468,546.00	336,270.75	33,632.01	127.21	10.5	555,116.06	854.03
114	008004	800.0	469.10	375,282.50	263,700.00	26,585.53	115.76	10.5	444,634.62	555.79

Total Import Duties:	\$187,000.00
Total Indirect Costs:	\$3,000.00
Total Uplift Costs:	\$138,017.00
Total Landed Cost:	\$1,452,465.10

*The implication for import companies susceptible to fluctuating exchange rates and numerous ancillary charges is that without instant desktop access to accurate information about the actual Landed Cost of their inventory, they run the risk of overestimating*

*their profit projection.*

*Landed Cost for eBackOffice has been developed specifically to assist importers obtain a true account of all shipping and ancillary costs, as well as providing estimations prior to actual shipping.*

*Landed Cost integrates with eDistribution (Inventory, Purchase Orders), Accounts Payable and General Ledger to provide increased user productivity.*





by Epicor

## Landed Cost

### Shipment Entry

*The shipment entry brings together the purchase orders, import duty, indirect costs, uplift factor, shipped and received totals, and calculates the Landed Cost of the items in a shipment.*

*Projected landed units costs can be calculated by using estimated landing charges. Costings can be modified and updated an unlimited number of times and will have no effect of the inventory until the shipment is closed. When updating the inventory, either actual landing costs or estimated costs can be used, with automatic accrual of the liability if estimates are used.*

*The shipment, when completed updates the Inventory (received quantities and costs), Accounts Payable and the General Ledger.*

The screenshot shows the 'LC SHIPMENT ENTRY - Demo Distribution Company' window. It includes a menu bar, a toolbar, and a main form area with various input fields and buttons. Below the form is a table with columns for PO No, Item No, Received, Unit Cost, Extended Cost, Calc. Duty, Actual Duty, Indirect Cost, % Cost Uplift, Landed Cost, and Landed Unit Cost. At the bottom, there are summary statistics for Total Import Duties, Total Indirect Costs, Total Uplift Costs, and Total Landed Cost.

PO No	Item No	Received	Unit Cost	Extended Cost	Calc. Duty	Actual Duty	Indirect Cost	% Cost Uplift	Landed Cost	Landed Unit Cost
114	007056	490.0	720.84	468,548.80	23,427.44	26,743.28	127.21	10.5	546,333.22	843.51
114	008024	800.0	469.16	375,282.98	18,764.15	20,618.95	115.76	10.5	437,599.54	547.00
114	008020	1,900.0	177.97	266,960.92	13,348.05	14,867.48	128.96	10.5	311,341.43	207.56

### Desktop Reporting

*Landed Cost can track an inventory item across multiple shipments as well as provide detailed and summarised reports on shipments. Cost and quantity variance reports as well as event tracking reports are available on demand.*

*reports as well as event tracking reports are available on demand.*

- Multiple orders can be consolidated into a single shipment
- Multiple suppliers can be consolidated into a single shipment
- Multiple currencies can be applied to a single shipment
- Shipments can be refreshed for changes to the original purchase order
- An uplift factor can be applied to a shipment or individual shipment lines
- Duties and Indirect costs are apportioned across the items in a shipment
- Track inventory losses between supplier shipping records and your receiving records
- Automates the eBackOffice receiving and invoice matching into a single step
- Supports Serial/Lot/Bin tracking
- Seamless integration with Purchase Orders, Inventory, Accounts Payables and General Ledger
- Enquire on item status across all shipments and across all locations
- Detailed and Summarised Shipment Reporting
- Quantity and Cost Variance Reporting



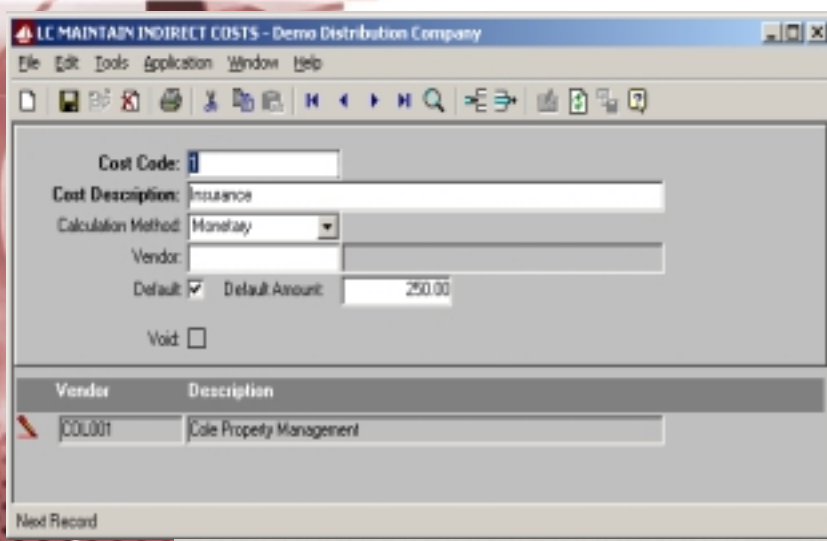


by Epicor

## Landed Cost

### Indirect Costs

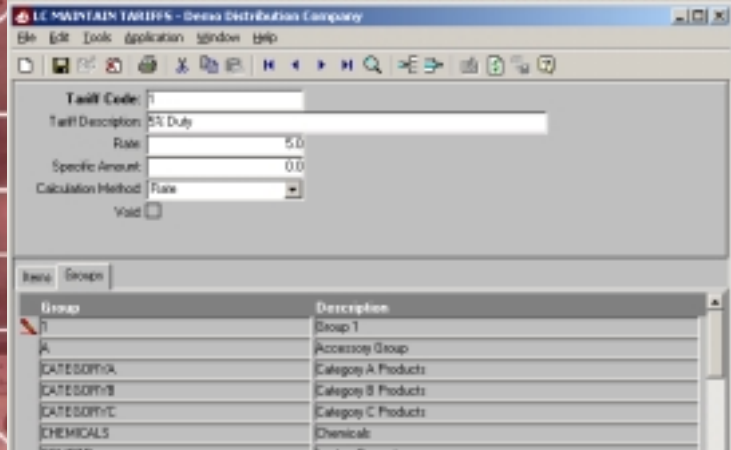
**Landed Cost allows the entry of the indirect costs at the time of entering your shipment. Costs such as freight, insurance, wharfage and handling can be apportioned by monetary value, quantity, volume or weight. The indirect costs can be entered in the shipment entry or integrated with Accounts Payable. This ensures that the inventory will be updated with the actual costs associated with the item. If the costs are from multiple suppliers and in multiple currencies Landed Cost will bring them all together for one shipment.**



**ensures that the inventory will be updated with the actual costs associated with the item. If the costs are from multiple suppliers and in multiple currencies Landed Cost will bring them all together for one shipment.**

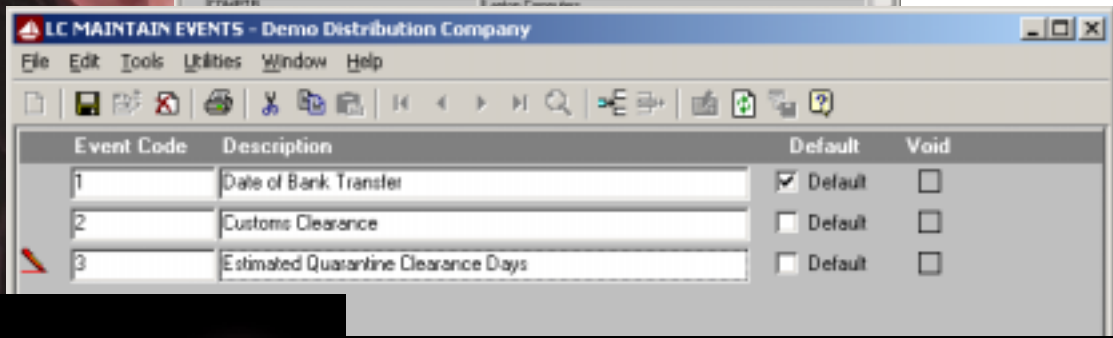
### Tariffs

**Tariffs are established on either individual items or item groups. These tariffs control the calculation of import duty in a Landed Cost shipment. They can be overridden where necessary on individual shipment lines. As an alternative, the total value of the tariff may be entered and Landed Cost will calculate the Tariff for each shipment line.**



### Events

**Landed Cost events are user-defined codes that can be attached to a shipment to record events that occur in a shipment or for a particular item in a shipment. There is no limit to the number of events that can be attached to a shipment.**



Star System Solutions Pty Ltd  
Phone: +61 3 8415 8315 Fax: +61 3 8415 8333 Email: sales@starsystemsolutions.com



'e' by Epicor is a registered trade mark of Epicor Software Corporation. Landed Cost is not produced by Epicor, but integrates with the 'e' for Epicor Product. The products described herein are produced by Star System Solutions. Copyright 1999-2001 Star System Solutions Pty Ltd. All Rights Reserved. All other trademarks are property of their respective owners. This document is for informational purposes only and subject to change without notice. Star System Solutions makes no warranties, expressed or implied in this document. The contents of this document are believed to be current and accurate as of its date of publication. Companies, names and/or data used in screens are fictitious. Printed June 2001.